

*Redline*<sup>TM</sup>



Designed In Value / Full Featured / Sweet Exterior Styling  
Rock Solid Construction / Cool Interiors

## Key Product Features

- All New Graphics Packages
- 6 Floor Plans  
Conventional – 180FKE, 230FSE, 260FSE, 300FSE  
5th Wheel – 335FSE, 375FSGE
- 5 Interior Décors  
Fabric - *Shockin Blue (blue)* Wood - *Tarter Silver*  
*Sand Dune (green)* *Clear Oak*  
*Rev Red (red)* *Tarter Silver*  
*Alloy (grey)* *Tarter Silver*  
*Freestyle (brown)* *Clear Oak*

## New 07MY Features

### Exterior

- 26" Entry Door w/Safety Glass Window
- Radius Corner Luggage Doors
- Color Coordinated Ground Effect Skirts
- Smooth Fiberglass Siding (5th Wheels)
- Fiberglass Front Cap Option (5th wheels)
- Weather Sealing Around Corner Moldings
- Pet/Security Attachment
- Sewer Hose Storage
- Patio Utility Light
- LPG Tank Cover

### Interior

- Sidewall/Floor Located Diamond Plate
- 6 gal. LP / Water Heater
- Full Systems Monitor Panel
- Demand Water Pump
- Sofa/Sleeper Fold-Away
- Porcelain Toilet
- Double Handle High-Rise Galley Faucet
- Indoor / Outdoor Dinette Table

## Value Packages

### Interior Value Package

- 13.5M BTU A/C
- Electric Rear Loft Bed
- Electronic Touch Microwave Oven
- Kenwood AM/FM/CD w/4-Speakers
- Removable Living Room Carpet Kit
- 12V Bathroom Fan

- Bedroom TV Shelf
- Cable TV Hook-up
- Mirrored Door Medicine Cabinet
- Satellite ready

### Exterior Value Package

- Awning
- EZ Lift Ramp Door w/Integrated Locking Hardware
- 15" Chrome Wheels w/Radial Tires
- Base Camp Flood Lights
- Diamond Plate Gravel Guard
- Weather Resistant Exterior Speakers
- TV Antenna
- Spare Radial Tire
- Roof Ladder
- Exterior Shower
- Cargo Rack
- Stabilizer Jacks
- Tinted Safety Glass Windows
- Black Tank Flush
- Floor w/Beavertail Departure Angle
- Ram Air Cargo Vents

### New Optional Features

- Hitch Assembly Side Pivot – Reese (5th Wheel)
- Heavy Duty Storage Racks & Ladder (Conventional)
- Exterior Barbecue
- Water Heater – 6 gal. LP / DSI
- A/C – 15M
- "Rock the Box" Stereo Group
- Generator ready w/Pump Station 18 Gal. (180FKE)
- Generator ready w/Pump Station 30 Gal.
- Generator w/Pump Station
- Room Divider Wall (some models)
- Heated Holding Tanks
- Dual Electric Bunks
- Dual Electric Bunks w/Fold Over Sofa (260FSE, 335FSE)
- Front Fiber Glass Cap (335FSE)
- Fold-Up Dinette Seats
- Action Seal Program

For complete list of features and options, please refer to model brochure

## Weights and Measurements 2007 Redline

WEIGHTS	180FKE	230FSE	260FSE	300FSE	335FSE	375FSGE
GVWR (lbs) <sup>1</sup>	8,100	9,995	10,800	12,600	14,000	15,800
Gross Dry Weight (lbs) <sup>2,6</sup>	4,100*	5,550	6,000*	7,600*	8,500*	10,300*
Cargo Carrying Capacity (lbs) <sup>3,6</sup>	4,000*	4,445	4,800*	5,000*	5,500*	5,500*
Hitch Dry Weight (lbs) <sup>2,6,9</sup>	680*	765	1,100*	1,100*	2,100*	2,350*

### DIMENSIONS & CAPACITIES

Length (Feet & Inches) <sup>4,6,8</sup>	21' -11"	27' -3"	29' 8"	35' 2"	35' 2"	38' 10"
Height (Feet & Inches) <sup>5,6</sup>	12' -2"	12' -2"	12' 2"	12' 2"	12' 9"	13' 1"
Fresh Water Holding Tank (gal) <sup>6,7</sup>	50	100	100	120	120	120
Grey Water Holding Tank (gal) <sup>6,7</sup>	40	40	40	55	55	55
Black Water Holding Tank (gal) <sup>6,7</sup>	40	40	40	40	40	40
Propane Capacity (lbs) <sup>6,7</sup>	60	60	60	60	60	60
Tire Size (Load Range)	ST225/75R15C	ST225/75R15D	ST225/75R15D	ST225/75R15D	ST235/80R16D	ST235/80R16D

\* = ESTIMATED

# Interior Décors

## Shockin Blue (Blue)



Living Room Feature



Living Room 1st Coord

## Sand Dune (Green)



Living Room Feature



Living Room 1st Coord



Border

## Rev Red (Red)



Living Room Feature

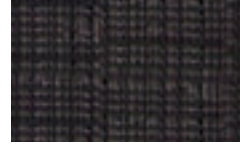


Living Room 1st Coord

## Alloy (Grey)



Living Room Feature

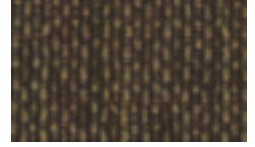


Living Room 1st Coord

## Freestyle (Brown)



Living Room Feature

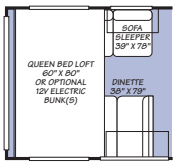


Living Room 1st Coord

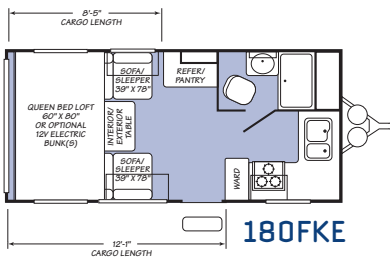


Border

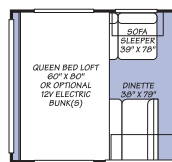
# Floor Plans



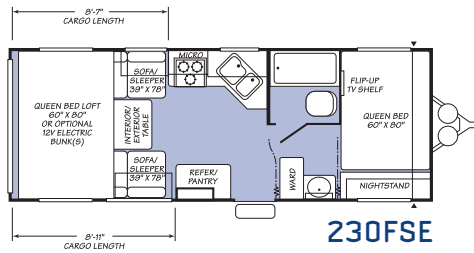
OPT. 833 FOLD DOWN DINETTE



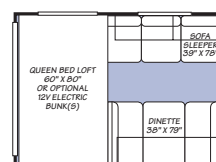
180FKE



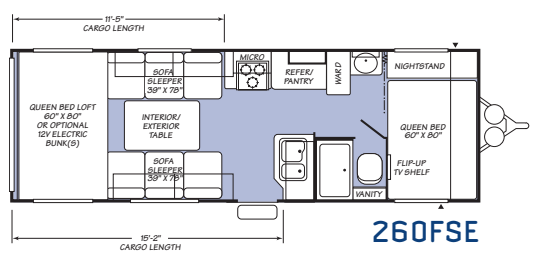
OPT. 833 FOLD DOWN DINETTE



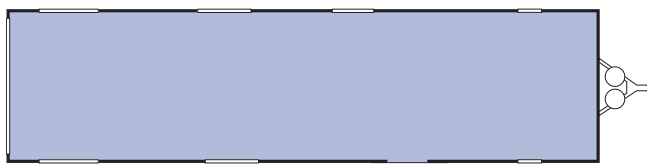
230FSE



OPT. 833 FOLD DOWN DINETTE

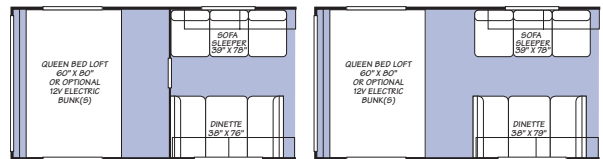


260FSE



COMING SOON

300FSE

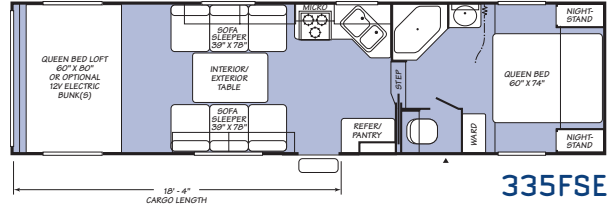


OPT. 376 DIVIDER WALL

8'-7" CARGO LENGTH

OPT. 833 FOLD DOWN DINETTE

15'-9" CARGO LENGTH



335FSE



COMING SOON

375FSG

1. GVWR (Gross Vehicle Weight Rating) is the maximum permissible weight of this trailer when fully loaded. It includes all weight of this trailer when fully loaded. It includes all weight at the trailer axle(s) and tongue or pin.
2. All dry weights are based on the standard model and do not include optional features or equipment.
3. Carrying Capacity is determined by subtracting Gross Dry Weight from GVWR. Cargo Carrying Capacity includes all fluids, optional features, equipment, and personal cargo.
4. Length taken from hitch or pin box to rear bumper (excludes accessories). Trailer length includes 3'6" for hitch; fifth wheel includes standard pin box.
5. Actual height may be lower, based on option offerings. Consult with your dealer to obtain actual height for the unit you are interested in.
6. Approximate.
7. Water weight equals 8.3 lbs. per gallon. Propane weight equals 4.2 lbs per gal.
8. Add 10" if equipped with optional spare tire and carrier.
9. Hitch weights are dependent upon how the trailer is equipped with options, on-board cargo and tank fluid levels. Actual hitch weights may be higher or lower than shown. It is recommended that the tow vehicle and hitch for your trailer have sufficient capacity to accommodate actual usage.

\* = Estimated weights.

## WWW.FLEETWOODRV.COM

To locate a dealer near you, visit our website or call 1-800-444-4905. We can also be contacted at Fleetwood Customer Relations, P.O.Box 1007, Decatur, IN 46733

## RV OWNERCARE\*

See your local dealer for complete details.

## IMPORTANT—PLEASE READ

Product information, photography and illustrations included in this publication were as accurate as possible at the time of printing. For further product information and changes, please visit our website at [www.fleetwoodrv.com](http://www.fleetwoodrv.com) or contact your local Fleetwood dealer. Prices, materials, design and specifications are subject to change without notice. All weights, fuel, liquid capacities and dimensions are approximate. Fleetwood has designed its recreational vehicles to provide a variety of uses for customers. Each vehicle features optimal seating, sleeping, storage and fluid capacities. The user is responsible for selecting the proper combination of loads (i.e.: equipment, fluids, cargo, etc.) to ensure that the vehicle's capacities are not exceeded.

## TO OUR CUSTOMERS...

To make sure that you get the maximum satisfaction out of your

recreational vehicle purchase, there are several things you should know:

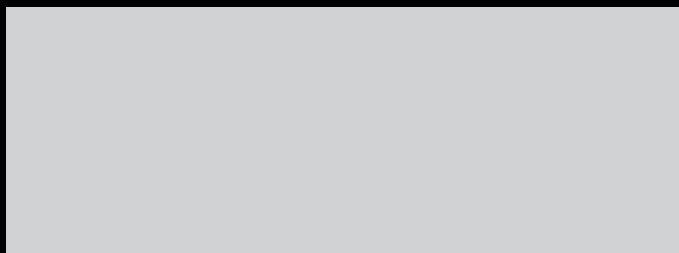
1. Learn all you can about the travel trailer or fifth wheel you're planning to buy. Don't rely on word of mouth. Get the facts about the actual trailer length, width, unloaded weight with options, Gross Vehicle Weight Rating, and cargo carrying capacity. These are usually available in the manufacturer's sales literature or from the Cargo Carrying Capacity Label located in each trailer. Be sure to check this information **before** you decide which unit to buy.

2. Verify the towing capacity of your tow vehicle. If you don't know, or aren't sure, you can ask at your automotive dealership. Be sure to match its tow rating to the loaded (not dry) weight of your trailer. Include the weight of water, additional accessories clothing, food, and gear. To help Fleetwood travel trailer customers estimate this total weight, our Gross Vehicle Weight Ratings reflect the maximum weight of the trailer when fully loaded for camping. Be sure the weight of the tow vehicle plus the weight of your trailer do not exceed the Gross Combined Weight Rating of the tow vehicle.

Taking these simple steps before you buy will help ensure that your trailer and tow vehicle combination is just what you wanted.

See you on the trail!

Your local Fleetwood dealer is:



treadlightly!  
LEAVING A GOOD IMPRESSION



\*For complete info see your Fleetwood dealer.  
©2006. Fleetwood Enterprises, Inc. Printed in U.S.A.  
Model Year 2007 1st Edition PG07F1 6/06.

**FLEETWOOD**  
Driven to Explore